



Product



3.1 Laser Product Series

**H1000 Series
laser marking
machine**



**H2000 Series
Laser printer
machine**



3.2 HF20XX Fiber laser printing machine

HF20XX Fiber laser printing machine



Features:

- Flying marking, marking on all kinds material, can add to the production line.
- High speed, clear marking.
- Automatic sensing and ID the workpiece.
- Full functions can be support.
- Wiring is regular, easy to trouble-shoot.
- Less power consumption, lower than 700W.
- Air-cooled, easy to carry and transport.
- High electro-optical conversion rate, maintenance free.
- High stability, easy to operate.



3.2 Advantage of HF20XX



Laser source

Raycus/Ruike
Best in China
20W/30W/50W/100W...
Support IPG



Touch industrial system

10 inch control computer,
support USB interface

Galvanometer

Built-in double red light ,
focusing is more convenient



High quality control card

High response,high stability
marking control card



Famous brand encoder

High precision,high stability
OMRON encoder



Light path support

High quality,
Full Aluminum alloy
Positioning accuracy
Easy to adjust

Optic electrical switch

YIBOHN/PANASONIC/OMRON
Fiber optic switch



Frame and stand

Full Aluminum alloy
Lifting stand
Stronger stand
Smaller package size



3.2 HFC20XX-AC Fiber laser printing machine



HFC20XX-AC Fiber laser printing machine

Features:

- Flying marking, marking on all kinds material, can add to the production line.
- Fully enclosed enclosure,thermostatic A/C intelligently adjusts the laser enviroment.
- High speed, clear marking.
- Automatic sensing and ID the workpiece.
- Full functions can be support.
- Wiring is regular, easy to trouble-shoot.
- Less power consumption, lower than 700W.
- Air-cooled, easy to carry and transport.
- High electro-optical conversion rate, maintenance free.
- Digital voltage,current,frequency detection.
- High stability, easy to operate.
- Anti-dumping design.



3.2 Advantage of HF20XX-AC



Laser source

Raycus/Ruike
Best in China
20W/30W/50W/100W...
Support IPG



Touch industrial system

10 inch control computer,
support USB interface



Galvanometer

Built-in double red light ,
focusing is more convenient



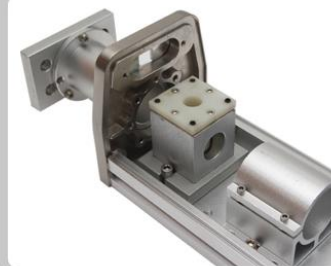
High quality control card

High response,high stability
marking control card



Famous brand encoder

High precision,high stability
OMRON encoder



Light path support

High quality,
Full Aluminum alloy
Positioning accuracy
Easy to adjust

Optic electrical switch

YIBOHNB/PANASONIC/OMRON
Fiber optic switch



Frame and stand

Enclosed laser
thermostatic chamber
Stronger stand
Easy to move,
not easy to dump



3.2 HFC20XX-AC-D Fiber laser printing machine



HF20CXX-AC-D Fiber laser printing machine

Features:

- Flying marking, marking on all kinds material, can add to the production line.
- Fully enclosed enclosure,thermostatic A/C intelligently adjusts the laser enviroment.
- High speed, clear marking.
- Automatic sensing and ID the workpiece.
- Full functions can be support.
- Wiring is regular, easy to trouble-shoot.
- Less power consumption, lower than 1000W.
- Air-cooled, easy to carry and transport.
- High electro-optical conversion rate, maintenance free.
- Digital voltage,current,frequency detection.
- High stability, easy to operate.
- Anti-dumping design.





3.2 Advantage of HF20XX-AC-D



Laser source

Raycus/Ruike
Best in China
20W/30W/50W/100W...
Support IPG



Touch industrial system

10 inch control computer,
support USB interface



Galvanometer

Built-in double red light ,
focusing is more convenient



A/C constant temperature

Controls the internal temperature
of the chassis, constant
temperature and dry environment
improves the stability and life of
the equipment



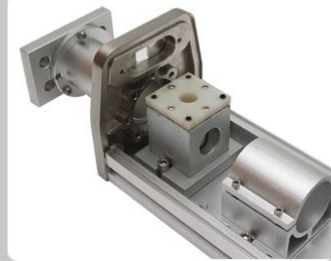
Stepper motor

High-quality stepper motor,
precise positioning



Light path support

High quality,
Full Aluminum alloy
Positioning accuracy
Easy to adjust



Module guide

Brand guide rail, low noise,
high precision, dustproof,
good bearing capacity



Frame and stand

Enclosed laser
thermostatic chamber
Stronger stand
Easy to move,
not easy to dump



3.3 Parameter

(Order number)	(Designation)	(Parameter)
1	Model number	HF20XX
2	Type	Fiber laser printing machine
3	Laser power	20/30/50 W
4	Laser wave length	1064nm
5	Marking depth	≤0.01MM
6	Marking speed	≤7000mm/s
7	Marking line width	0.01-0.2mm
8	Min character size	0.015mm
9	Repeat accuracy	0.01mm
10	Power source	MingWei power source
11	Laser head	Sino galvo/Ouya
12	Size	520*680*1360
13	Accessory	a set of tools ,operation manual,fuse
14	Communication port	USB
15	Levels of protection	IP45
16	Environment condition	-10-55°C
17	Weight	65KG
18	Control software	High speed printing control system
19	Working life	Lasers in theory for 100 thousand hours



3.3 Parameter and configuration

Project	(Designation)
Laser source	RAYCUS
Scan galvanometer	OUYA/SINO GALVO
industrial Computer	10 inch High speed printing control system
Display	10 inch
Power supplier	Meanwell
Full frame	LSD MACHINE
Aluminum stand up and down	LSD MACHINE
Master power	Schneider/Delixi
Focus system	Double red dot focus system
Lens	Wavelength/Carman haas
Encoder and senior	Yes

Plastic pipe reference

Model	LaserModel	Material and color	Speed m/min
HF2020	Fiber laser Power:20W	PE-Black	0.1-15
		PPR-Orange、 Gray、 white、 Blue、 Green	0.1-5
		PVC- Gray、 white、 Red	0.1-10
HF2030	Fiber laser Power:30W	PE-Black	0.1-25
		PPR-Orange、 Gray、 white、 Blue、 Green	0.1-15
		PVC- Gray、 white、 Red	0.1-15
HF2050	Fiber laserPower:50W	PE-Black	0.1-38
		PPR-Orange、 Gray、 white、 Blue、 Green	0.1-30
		PVC- Gray、 white、 Red	0.1-25

3.3 Sample



DIY coca



Copper



Gold ring



DIY lighter



Measurer



Paint



Panel



Plastic bottle



Peek



ABS



Car parts



Scale



Spoon



Plastic



Stainless steel



Brass



Bearing



PP



Signage



Bottle opener



PU



Deep craving



Bottle opener



Metal

3.4 Price and Service

Model	LaserModel	Working size	Price
HF2030	Fiber laser Power:30W	110*110mm	
HF2030-AC-DOUBLE	Fiber laser Power:30W	110*110mm	

a)The equipment lens and other optical devices are wearing parts. They are not under warranty. In addition, the Main board for the machine, the working power, laser source, laser galvanom scanning lens and etc main components warranty period is 24 months which start from the arrival of the goods. Because of the use of non-genuine components or running in wrong way, the damage is not covered by the warranty.

b)Not warranty parts damaged, we shall be responsible to provide replacement parts, but the parts cost, freight should be bear by you.

c)In the warranty parts damaged, we shall provide free replacement parts and bear the post cost.

d)If you required our engineer on-site service during the warranty period, you should be bear the travel fee and accommodation fee. If not during the warranty period, you should be bear an additional 30usd salary per day.

The failure rate of the Fiber laser printing machine is very low in the normal operation and they are modular designed. So the maintenance is convenient in case of failure.